

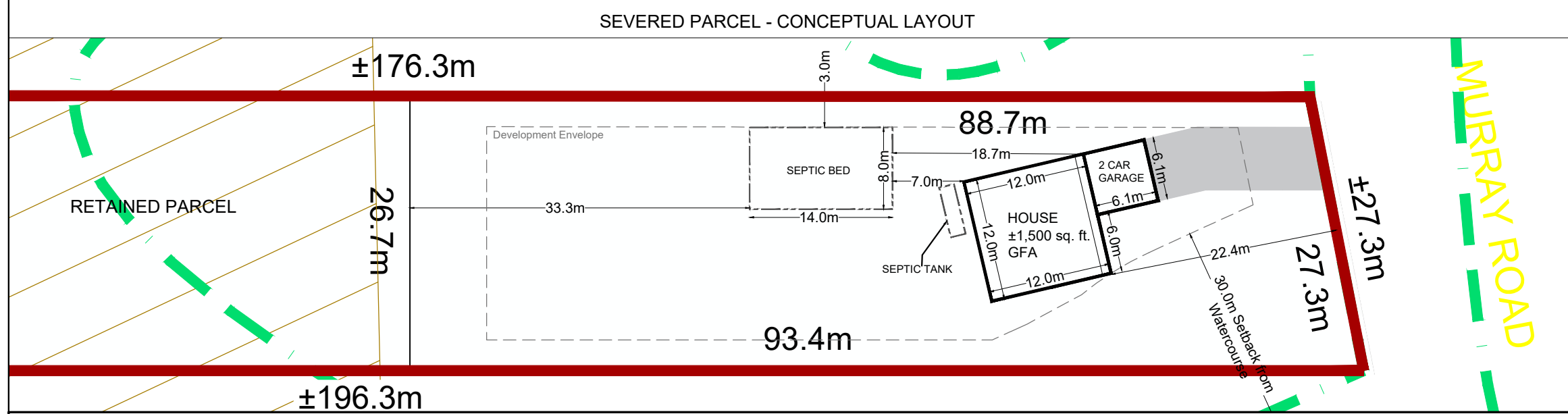
LEGEND

SUBJECT SITE (±0.501 ha.)

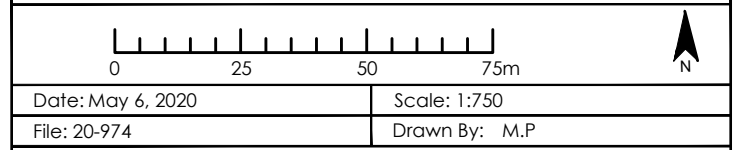
	Required	Provided
Lot Area - Gross (min.)	2,000m ²	±2,437m ²
Lot Frontage (min.)	35.0m	± 27.3m
Setback (min.)		
Front Yard	7.5m	±22.4m
Exterior Side Yard	7.5m	n/a
Interior Side Yard	3.0m	±3.0m
Rear Yard	7.5m	±54.2m
Potential Lot Coverage (max.)	35.0% ±852m ²	7.4% ±181.1m ²
Ground Floor Area (min.)	85.0m ² 915ft ²	±143m ² ±1,550ft ²
Height (max.)	11.0m	<11.0m

	Required	Provided
Lot Area - Gross (min.)	2,000m ²	±2,574m ²
Lot Frontage (min.)	35.0m	± 30.7m
Setback (min.)		
Front Yard	7.5m	±25.5m
Exterior Side Yard	7.5m	n/a
Interior Side Yard	3.0m	±0.0m
Rear Yard	7.5m	±61.0m
Potential Lot Coverage (max.)	35.0% ±900m ²	2.7% ±69.0m ²
Ground Floor Area (min.)	85.0m ² 915ft ²	±69m ² ±743ft ²
Height (max.)	11.0m	<11.0m

Does not meet RU Zoning Requirements



Note: This drawing is for discussion purposes only. The information shown is approximate and subject to change.



SEVERANCE SKETCH

9795 COUNTY ROAD 93

FUTURE STUDY AREA
(Official Plan - Schedule B1: Policy Overlays - Feb 2019)

ENVIRONMENTAL PROTECTION
(Official Plan - Schedule B1: Policy Overlays - Feb 2019)

WATERCOURSE

IPS INNOVATIVE PLANNING SOLUTIONS
PLANNERS • PROJECT MANAGERS • LAND DEVELOPERS
647 WELHAM RD., UNIT 9, BARRIE, ONTARIO, L4N 0B7
tel: 705 • 812 • 3281 fax: 705 • 812 • 3434 e: info@ipsconsultinginc.com www.ipsconsultinginc.com