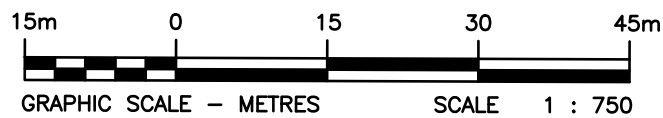


SEVERANCE SKETCH
40 EDWARD STREET
TOWN OF PENETANGUISHENE



BOWERS JONES FOURNIER SURVEYING LTD.
 2021

RE: PART OF LOT 114, CONCESSION 1
 GEOGRAPHIC TOWNSHIP OF TAY

CAUTION:

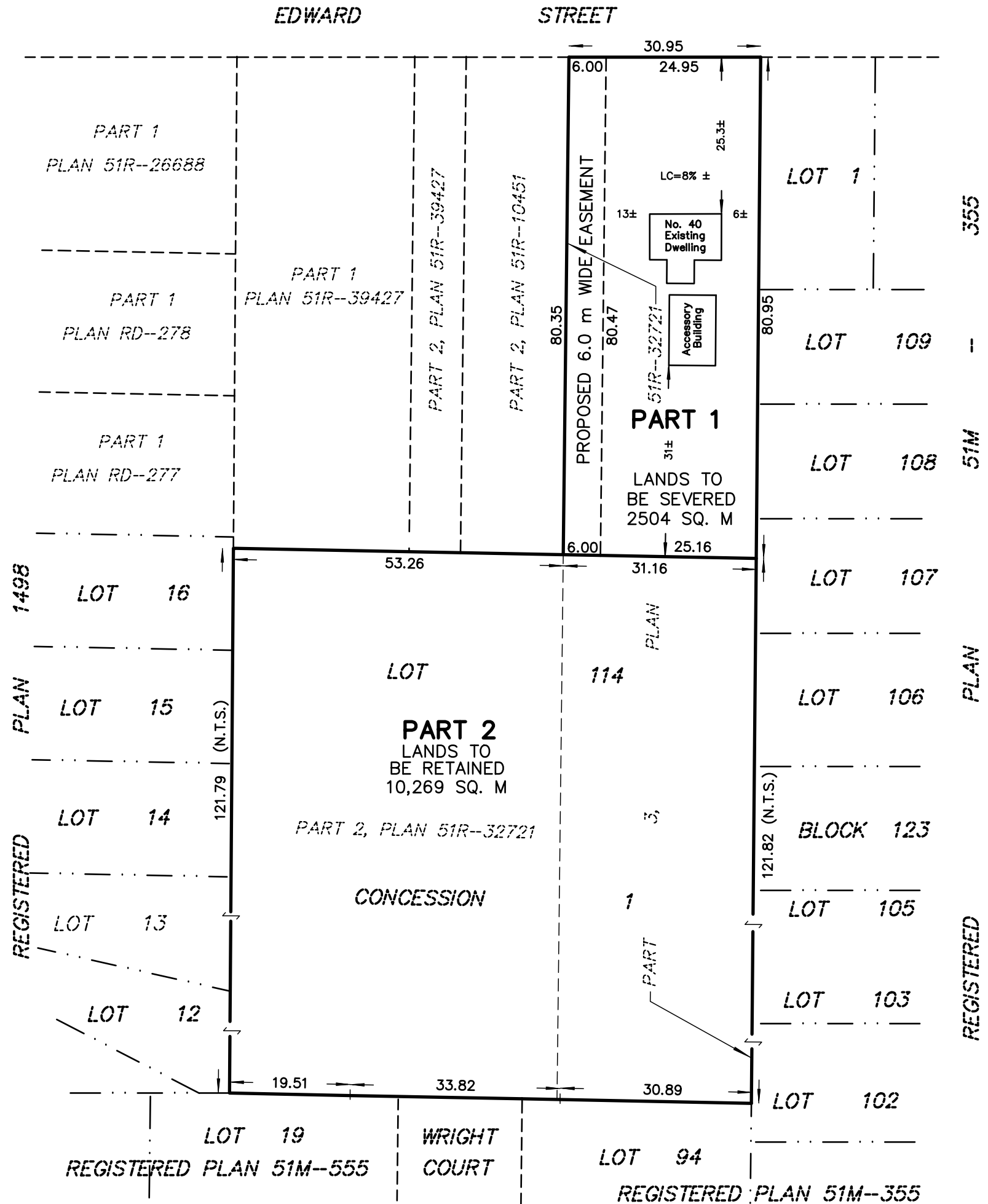
THIS IS NOT A PLAN OF SURVEY.
 BOUNDARY DIMENSIONS SHOWN HEREON ARE DERIVED FROM LAND REGISTRY RECORDS AND HAVE NOT BEEN VERIFIED BY FIELD SURVEY.
 POSITIONS OF BUILDING TAKEN FROM SURVEY RECORDS AND HAVE NOT BEEN VERIFIED BY FIELD SURVEY.

METRIC:

DISTANCES AND ELEVATIONS SHOWN ON THIS PLAN ARE IN METRES AND CAN BE CONVERTED TO FEET BY DIVIDING BY 0.3048.

NOTES:

THE REPRODUCTION, ALTERATION OR USE OF THIS SKETCH IN WHOLE OR IN PART WITHOUT THE EXPRESS PERMISSION OF BOWERS JONES FOURNIER SURVEYING LTD. IS STRICTLY PROHIBITED.



PROJECT No. 18-152

\\PROJECTS\2018\18-152\CAD\18-152_SKETCH.DWG

BOWERS JONES FOURNIER SURVEYING LTD.
 ONTARIO LAND SURVEYORS
 bjfsurveying.com

570 BRYNE DRIVE, UNIT N, BARRIE, ON, L4N 9P6
 238 MACKENZIE STREET, ALLISTON, ON, L9R 1A6

705-726-6201
 705-434-9315

(N.T.S.) DENOTES NOT TO SCALE

REVISED AUGUST 18, 2021.