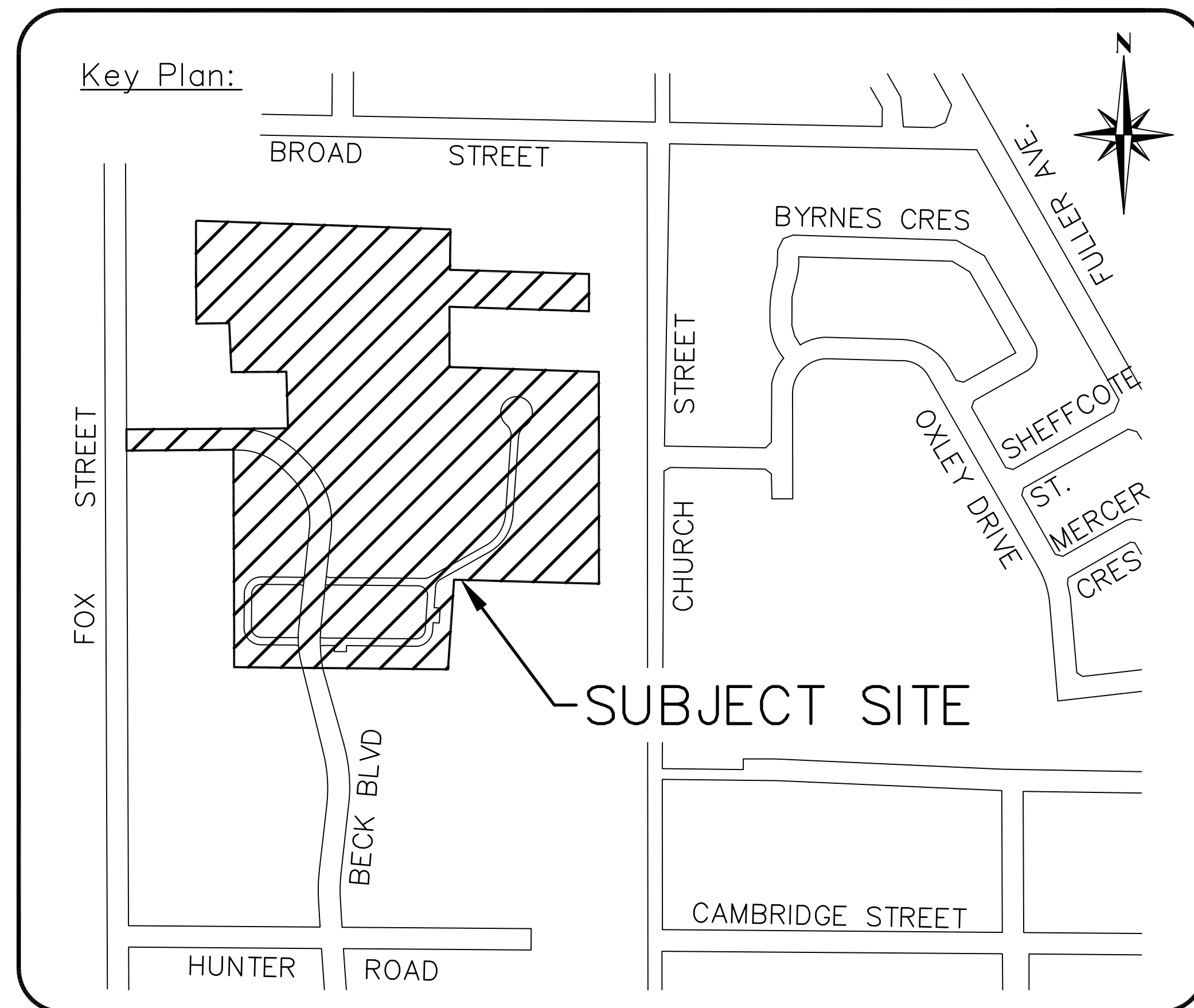


# QUEEN'S COURT HOMES TOWN OF PENETANGUISHENE SIMCOE COUNTY



DRAWING #	DRAWING TITLE
GEN	GENERAL SERVICING PLAN
SGR	SITE GRADING PLAN
STM	STORMWATER DRAINAGE AREA PLAN
SAN	SANITARY DRAINAGE AREA PLAN

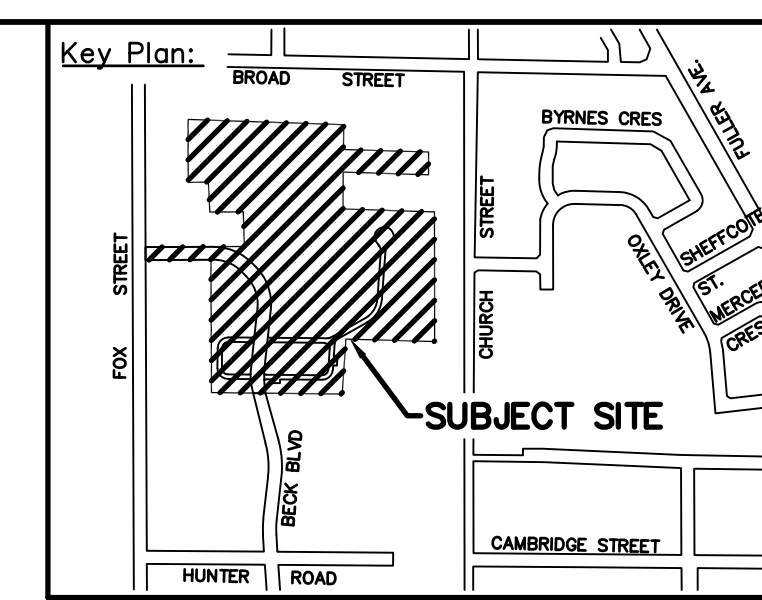
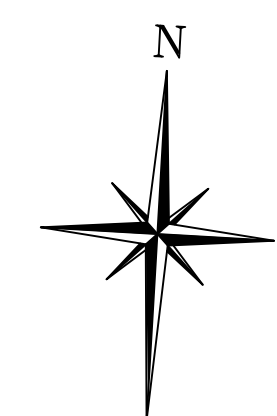
**MUNICIPALITY**

Town of Penetanguishene  
10 Robert Street West  
Penetanguishene, Ontario  
L9M 2G2  
Ph 705-549-7453  
<https://www.penetanguishene.ca/>

**PROJECT ENGINEER**

WMI & Associates Limited  
119 Collier Street  
Barrie, Ontario  
L4M 1H5  
Ph 705-797-2027  
[www.wmiengineering.ca](http://www.wmiengineering.ca)

**PROJECT No. 09-062**



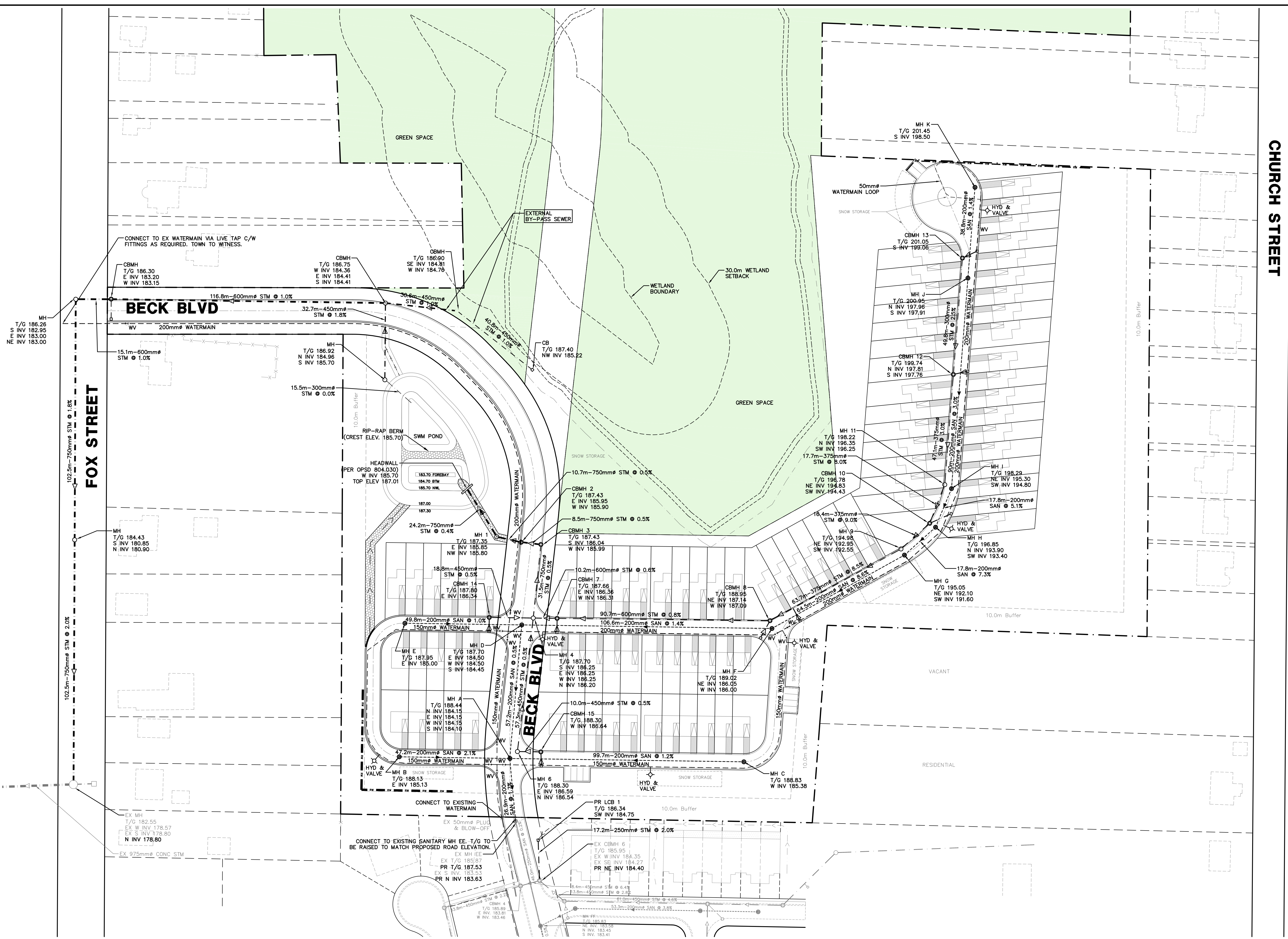
**Legend:**

**EXISTING FEATURES (EX)**

- EX SIB EX STD IRON BAR
- EX IB EX IRON BAR
- EX UP EX UTILITY POLE
- EX BELL PED EX BELL PED
- EX HYDRO TRANSFORMER
- EX W/S EX WATER SERVICE
- EX HYD EX FIRE HYD.
- HP EX HYDRO POLE
- SS EX STOP SIGN
- 123.45 EX ELEVATION
- EX FENCE
- EX U/G GASMAIN
- EX U/G BELL
- EX U/G HYDRO
- EX TOP OF SLOPE
- EX BOTTOM OF SLOPE
- EX W/V EX WATERMAIN & VALVE
- EX SAN SEWER & MH
- EX STM SEWER & MH
- BH 4 BOREHOLE LOCATION
- GROUNDWATER LEVEL

**PROPOSED FEATURES (PR)**

- NS PR STREET NAME SIGN
- SS PR STOP SIGN
- SF PR SILT FENCE
- PR FENCE
- PR STREET LIGHT
- PR HYDRO TRANSFORMER
- W PR WATER SERVICE
- S PR SANITARY SERVICE
- ST PR STORM SERVICE
- W/M PR WATERMAIN
- FR PR FIRE HYDRANT
- W/V PR WATER VALVE
- 0.00-0.00mm SAN @ 0.0% PR SANITARY SEWER
- 0.00-0.00mm STM @ 0.0% PR SANITARY MANHOLE
- MH 1 PR STORM SEWER
- CBM 1 PR CATCHBASIN MANHOLE
- MH 1 PR MANHOLE
- CB 1A PR CATCHBASIN
- 0000.00 PR ELEVATION
- x (000.00) PR MATCH EXISTING ELEVATION (INTERPOLATED)
- PR SWALE
- PR 3:1 SLOPE
- PR BUILDING
- PR BUILDING ENVELOPE



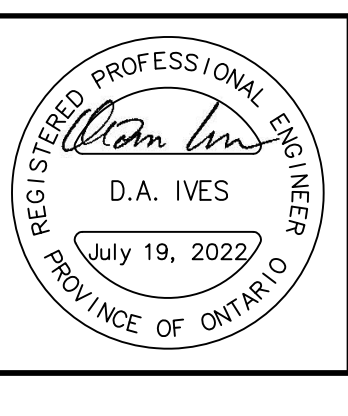
**CAUTION**  
 CONTRACTOR TO DETERMINE  
 LOCATION OF EXISTING UTILITIES  
 PRIOR TO CONSTRUCTION.

**Notes:**

- Unless noted otherwise, the measurements and distances shown on this drawing are shown in meters.
- Do not scale drawings.
- It is the contractor's responsibility to verify all dimensions, levels and datums on site and report any discrepancies or omissions to WMI & Associates Ltd. prior to construction.
- This drawing is to be read and understood in conjunction with all other relevant documents applicable to this project.
- This drawing is the exclusive property of WMI & Associates Ltd. and the reproduction of any part of this document without prior written consent is strictly prohibited.

**Benchmark:** 180.16m

MONUMENT IS LOCATED IN THE TOWN OF PENETANGUISHENE ON THE SOUTH SIDE OF BROAD STREET, BEING ON THE CENTRELINE PRODUCTION OF THE ASPHALT DRIVEWAY TO #19 BROAD STREET, AND WEST OF THE CENTRELINE OF JURY DRIVE. MONUMENT IS 4.8 METRES SOUTH OF THE CENTRELINE BROAD STREET AND 23.3 METRES WEST OF THE CENTRELINE OF JURY DRIVE.

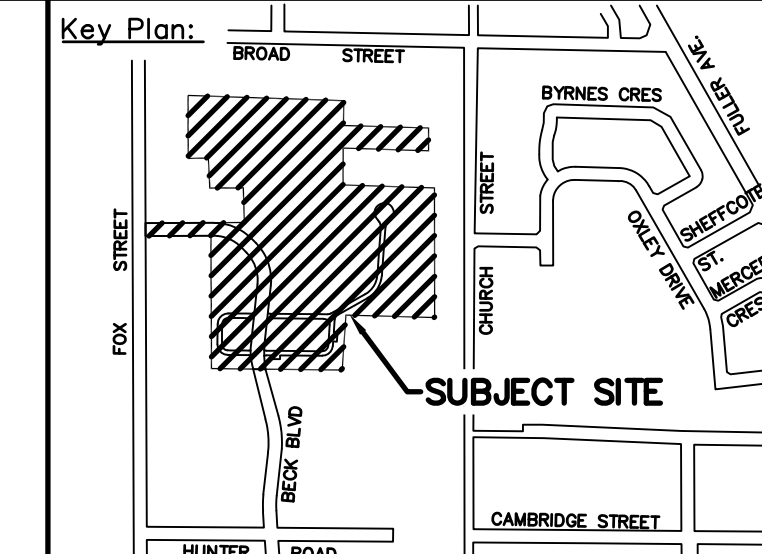
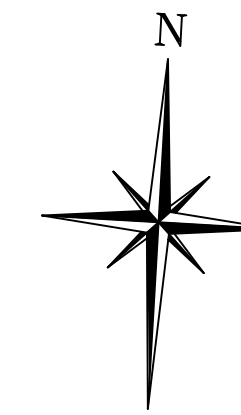


No.	Issue / Revision	Date
1	FSR SUBMISSION	JULY 19, 2022

**Client:**  
 Queen's Court  
 Development Limited  
 55 Temperance St. Suite 700  
 Toronto, Ontario  
 M5H 3V5

**QUEEN'S COURT HOMES**  
**GENERAL SERVICING PLAN**

Drawn By	JB	Checked By	DAI	Drawing No.	GEN
Scale	1:750	Project No.	09-062		



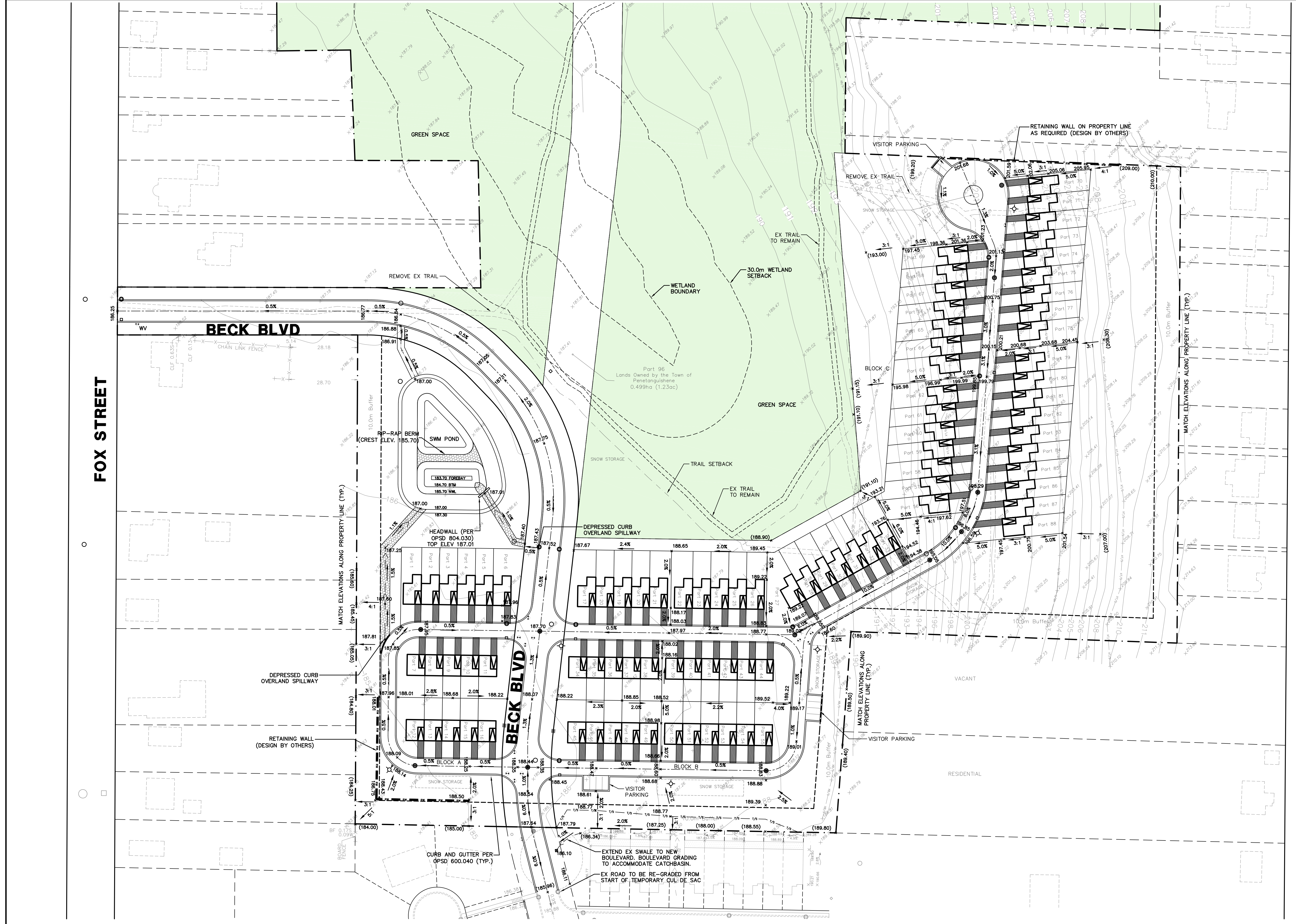
Legend:	
EXISTING FEATURES (EX)	
EX SIB	EX STD IRON BAR
EX IB	EX IRON BAR
EX UP	EX UTILITY POLE
EX BELL PED	EX HYDRO TRANSFORMER
EX FENCE	EX U/G GASMAIN
EX U/G BELL	EX U/G HYDRO
EX TOP OF SLOPE	EX BOTTOM OF SLOPE
EX W/W	EX WATERMAIN & VALVE
EX 00mm <sup>2</sup> SAM @ 0.0%	EX SAN SEWER & MH
EX 00mm <sup>2</sup> STM @ 0.0%	EX STM SEWER & MH
BH 4	BOREHOLE LOCATION
	GROUNDWATER LEVEL
PROPOSED FEATURES (PR)	
NS	PR STREET NAME SIGN
SS	PR STOP SIGN
SF	PR SILT FENCE
X-X-X-X-X-X-X-X	PR FENCE
TL	PR STREET LIGHT
TR	PR HYDRO TRANSFORMER
W	PR WATER SERVICE
S	PR SANITARY SERVICE
ST	PR STORM SERVICE
00mm <sup>2</sup> W/M	PR WATERMAIN
00mm <sup>2</sup> SAM @ 0.0%	PR FIRE HYDRANT
00mm <sup>2</sup> SAM @ 0.0%	PR WATER VALVE
MH A	PR SANITARY SEWER
MH A	PR SANITARY MANHOLE
CSMH 1	PR STORM SEWER
MH 1	PR CATCHBASIN MANHOLE
CB 1A	PR MANHOLE
000.00	PR CATCHBASIN
x (000.00)	PR ELEVATION
x (000.00)	PR MATCH EXISTING ELEVATION (INTERPOLATED)
	PR SWALE
	PR 3:1 SLOPE
	PR BUILDING
	PR BUILDING ENVELOPE

FOX STREET

CHURCH STREET

BECK BLVD

BECK BLVD

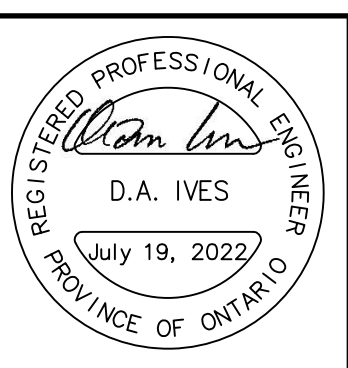


CAUTION  
CONTRACTOR TO DETERMINE  
LOCATION OF EXISTING UTILITIES  
PRIOR TO CONSTRUCTION.

**Notes:**

- Unless noted otherwise, the measurements and distances shown on this drawing are shown in meters.
- Do not scale drawings.
- It is the contractor's responsibility to verify all dimensions, levels and datums on site and report any discrepancies or omissions to WMI & Associates Ltd. prior to construction.
- This drawing is to be read and understood in conjunction with all other relevant documents applicable to this project.
- This drawing is the exclusive property of WMI & Associates Ltd. and the reproduction of any part of this document without prior written consent is strictly prohibited.

**Benchmark:** 180.16m  
MONUMENT IS LOCATED IN THE TOWN OF PENETANGUISHENIE ON THE SOUTH SIDE OF BROAD STREET, BEING ON THE CENTRELINE PRODUCTION OF THE ASPHALT DRIVEWAY TO #19 BROAD STREET, AND WEST OF THE CENTRELINE OF JURY DRIVE. MONUMENT IS 4.8 METRES SOUTH OF THE CENTRELINE BROAD STREET AND 23.3 METRES WEST OF THE CENTRELINE OF JURY DRIVE.

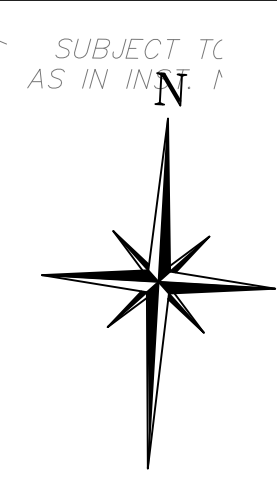
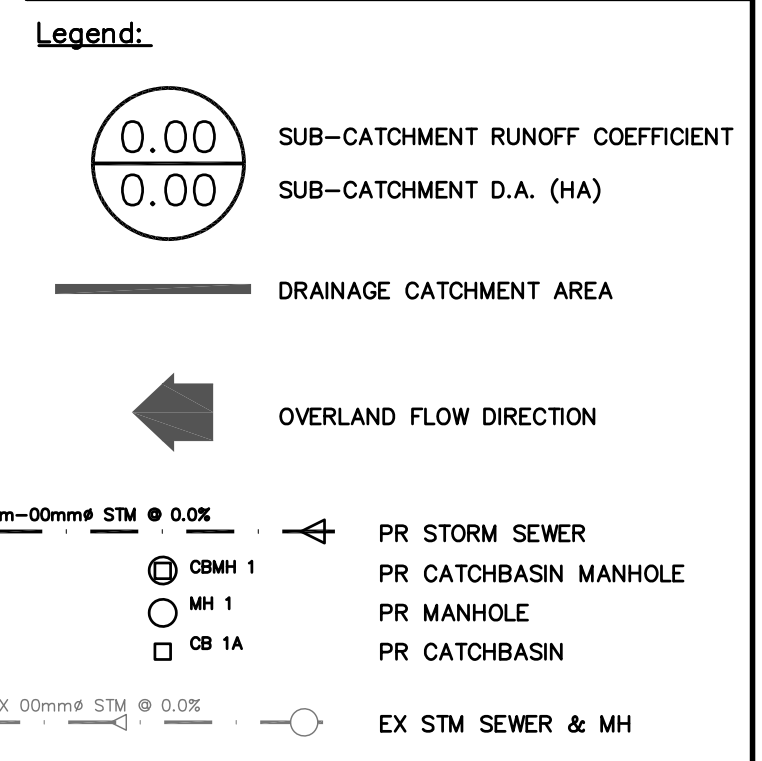
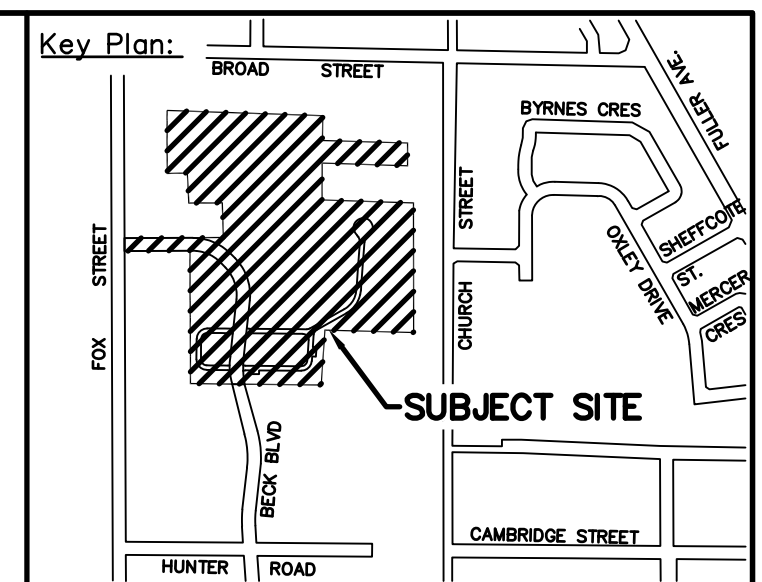
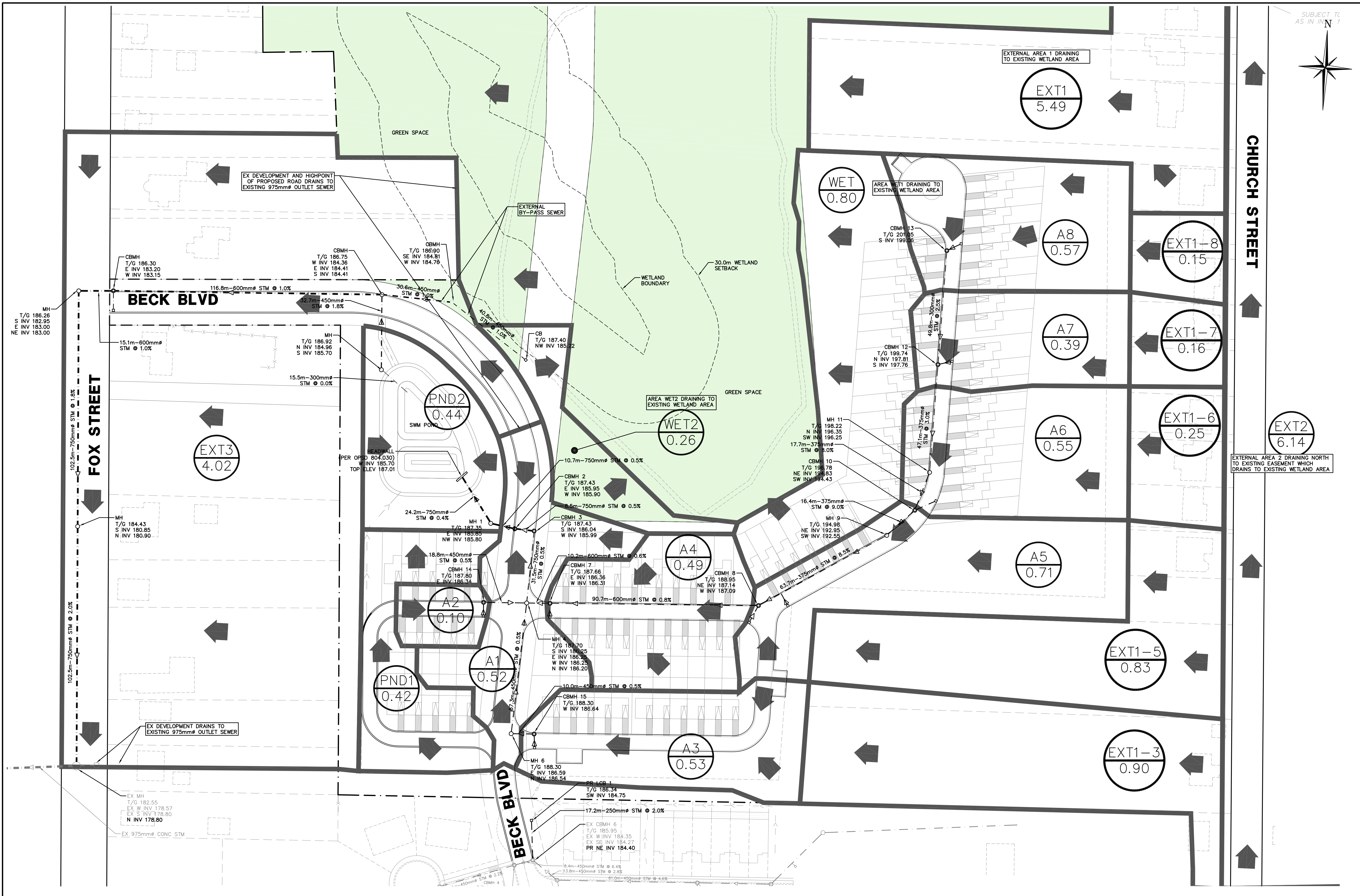


No.	Issue / Revision	Date
1	FSR SUBMISSION	JULY 19, 2022

QUEEN'S COURT HOMES  
SITE GRADING PLAN

**Client:**  
Queen's Court  
Development Limited  
55 Temperance St. Suite 700  
Toronto, Ontario  
M5H 3V5

	WMI & Associates Limited 119 Collier Street Barrie, Ontario L4M 1H5 Ph 705-797-2027 www.wmiengineering.ca
Drawn By JB	Checked By DAI
Scale 1:750	Project No. 09-062
	Drawing No. SGR

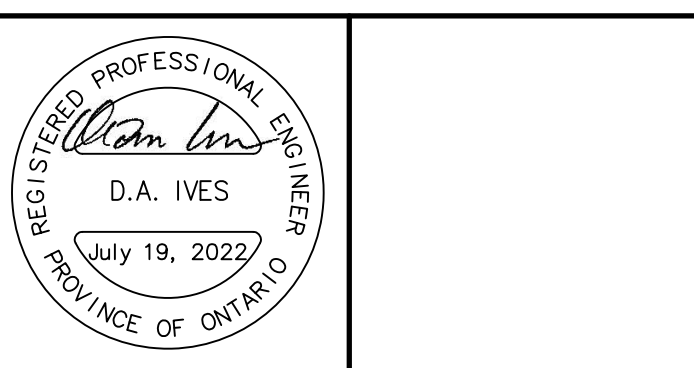


**CAUTION**  
CONTRACTOR TO DETERMINE  
LOCATION OF EXISTING UTILITIES  
PRIOR TO CONSTRUCTION.

**Notes:**

- Unless noted otherwise, the measurements and distances shown on this drawing are shown in meters.
- Do not scale drawings.
- It is the contractor's responsibility to verify all dimensions, levels and datums on site and report any discrepancies or omissions to WMI & Associates Ltd. prior to construction.
- This drawing is to be read and understood in conjunction with all other relevant documents applicable to this project.
- This drawing is the exclusive property of WMI & Associates Ltd. and the reproduction of any part of this document without prior written consent is strictly prohibited.

**Benchmark:** 180.16m  
MONUMENT IS LOCATED IN THE TOWN OF PENETANGUISHENE ON THE SOUTH SIDE OF BROAD STREET, BEING ON THE CENTRELINE PRODUCTION OF THE ASPHALT DRIVEWAY TO #19 BROAD STREET, AND WEST OF THE CENTRELINE OF JURY DRIVE. MONUMENT IS 4.8 METRES SOUTH OF THE CENTRELINE BROAD STREET AND 23.3 METRES WEST OF THE CENTRELINE OF JURY DRIVE.

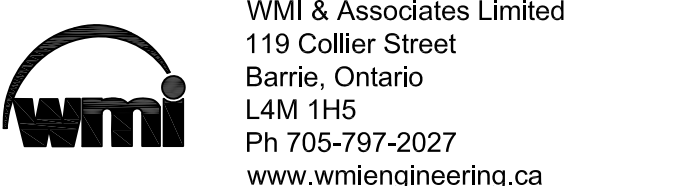


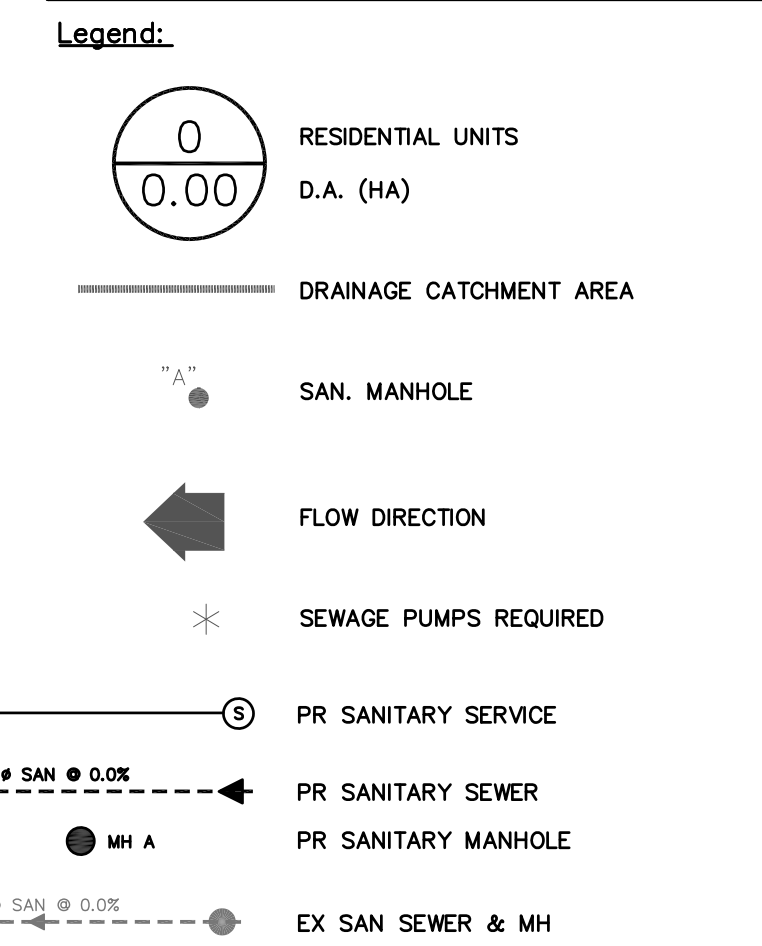
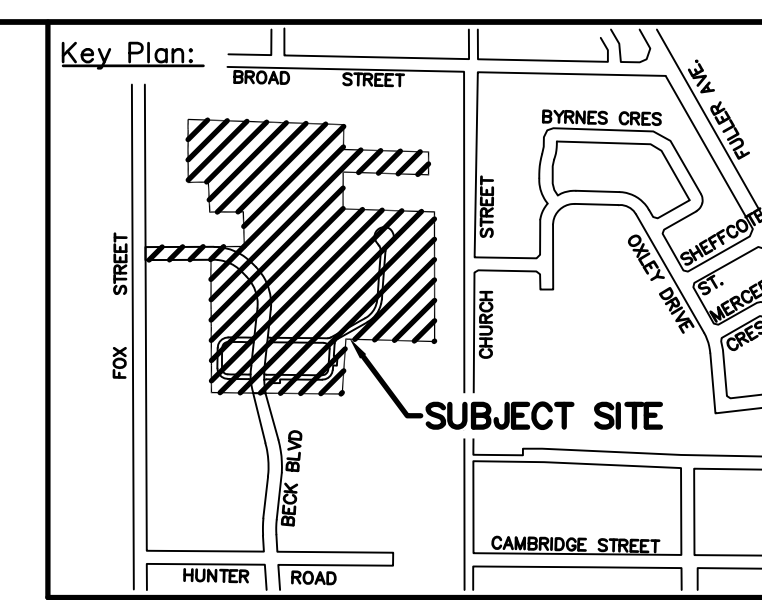
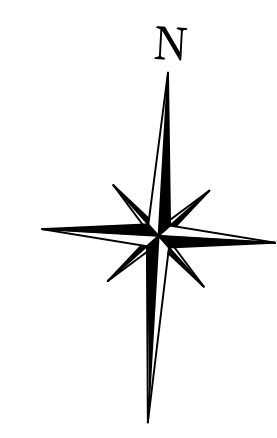
No.	Issue / Revision	Date
1	FSR SUBMISSION	JULY 19, 2022

**QUEEN'S COURT HOMES**  
**STORMWATER DRAINAGE**  
**AREA PLAN**

**Client:**  
Queen's Court  
Development Limited  
55 Temperance St. Suite 700  
Toronto, Ontario  
M5H 3V5

Drawn By: JB	Checked By: DAI	Drawing No. STM
Scale: 1:750	Project No. 09-062	





FOX STREET

BECK BLVD

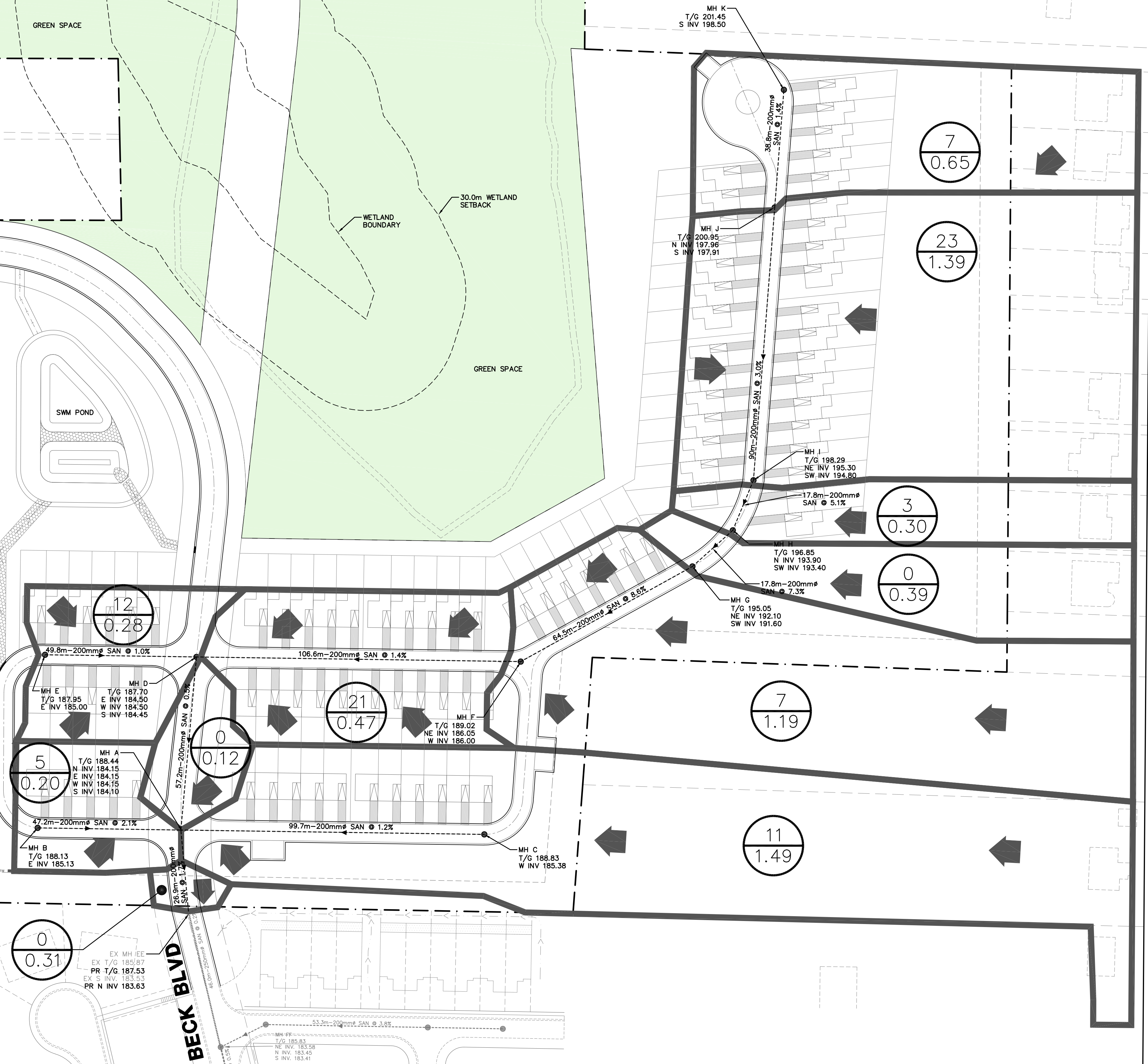
GREEN SPACE

WETLAND BOUNDARY

30.0m WETLAND SETBACK

GREEN SPACE

SWM POND

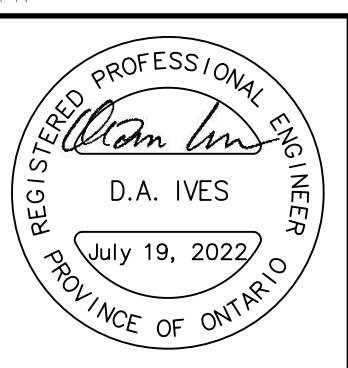


**CAUTION**  
CONTRACTOR TO DETERMINE  
LOCATION OF EXISTING UTILITIES  
PRIOR TO CONSTRUCTION.

**Notes:**

- Unless noted otherwise, the measurements and distances shown on this drawing are shown in meters.
- Do not scale drawings.
- It is the contractor's responsibility to verify all dimensions, levels and datums on site and report any discrepancies or omissions to WMI & Associates Ltd. prior to construction.
- This drawing is to be read and understood in conjunction with all other relevant documents applicable to this project.
- This drawing is the exclusive property of WMI & Associates Ltd. and the reproduction of any part of this document without prior written consent is strictly prohibited.

**Benchmark:** 180.16m  
MONUMENT IS LOCATED IN THE TOWN OF PENETANGUISHENE ON THE SOUTH SIDE OF BROAD STREET, BEING ON THE CENTRELINE PRODUCTION OF THE ASPHALT DRIVEWAY TO #19 BROAD STREET, AND WEST OF THE CENTRELINE OF JURY DRIVE. MONUMENT IS 4.8 METRES SOUTH OF THE CENTRELINE BROAD STREET AND 23.3 METRES WEST OF THE CENTRELINE OF JURY DRIVE.



No.	Issue / Revision	Date
1	FSR SUBMISSION	JULY 19, 2022

**QUEEN'S COURT HOMES**  
**SANITARY DRAINAGE**  
**AREA PLAN**

**Client:**  
Queen's Court  
Development Limited  
55 Temperance St. Suite 700  
Toronto, Ontario  
M5H 3V5

WMI & Associates Limited  
119 Collier Street  
Barrie, Ontario  
L4M 1H5  
Ph 705-797-2027  
www.wmiengineering.ca

Drawn By: JB	Checked By: DAI	Drawing No. SAN
Scale: 1:750	Project No. 09-062	